

2010 End of Growing Season
 Summary of all tree data by
 Orchard, type, and year planted for
 survival and height

	Planted	Surviving	Survival %	Average Height	Planted	Surviving	Survival %	Average Height	Planted	Surviving	Survival %	Average Height	Planted	Surviving	Survival %	Average Height	Planted	Surviving	Survival %	Average Height	Planted	Surviving	Survival %	Average Height	Planted	Surviving	Survival %	Average Height					
	TOTALS				Woodbridge				Salem				NCLT				GMFC				Guilford				Litchfield				Middletown				
Total Orchard	2945	1733	59%	4.72	583	363	62%	7.59	609	234	38%	4.28	411	306	74%	7.86	469	288	61%	3.43	448	211	47%	2.25	229	168	73%	1.59	196	163	83%	1.78	
2006 Totals (all trees)	380	195	51%	8.09	168	115	68%	10.17	212	80	38%	5.10																					
2007 Totals (all trees)	735	487	66%	7.52	176	114	65%	9.10	208	121	58%	4.28	233	180	77%	9.68	118	72	61%	5.04													
2008 Totals (all trees)	699	368	53%	4.54	183	103	56%	4.48	68	30	44%	2.42	150	109	73%	5.50	79	54	68%	1.91	88	15	17%	5.66									
2009 Totals (all trees)	375	142	38%	2.82	56	31	56%	2.78	121	3	2%	1.10	28	17	61%	3.71	62	51	82%	1.34	91	37	41%	3.93									
2010 Totals (all trees)	756	541	72%	1.61													269	159	59%	1.53	229	168	73%	1.59	196	163	83%	1.78					
Back-cross Trees	2198	1375	63%	4.788	445	314	71%	7.492	469	189	40%	4.368	305	243	80%	8.277	333	225	68%	3.348	328	162	49%	1.46	168	116	69%	1.53	150	126	84%	1.81	
2006 B3/4F1	290	161	56%	8.45	139	97	70%	10.47	151	64	42%	5.38																					
2007 B3/4F1	591	415	70%	7.75	150	107	71%	9.18	170	99	58%	4.26	188	153	81%	9.94	83	56	67%	5.17													
2008 B3/4F1	493	306	62%	4.48	120	81	68%	4.38	48	26	54%	2.29	115	89	77%	5.51	165	101	61%	4.17	45	9	20%	4.89									
2009 B3/4F1	255	98	38%	2.83	36	29	81%	2.73	100	0	0%	0.00	2	1	50%	3.00	48	38	79%	1.85	69	30	43%	4.15									
2010 B3/4F1	569	395	69%	1.62													37	30	81%	1.42	214	123	57%	1.56	168	116	69%	1.53	150	126	84%	1.81	
Back-cross lines (planted complete)	19	12			3	3			4	3			3	2			3	2			3	0			2	1			1	1			
OP American	246	140	57%	3.931	42	21	50%	7.046	54	18	33%	4.22	31	23	74%	6.612	34	21	62%	3.053	43	19	44%	2.00	26	25	96%	1.95	16	13	81%	1.8	
2006 OP American	50	18	36%	5.45	10	6	60%	8.06	40	12	30%	4.14																					
2007 OP American	44	26	59%	6.88	9	5	56%	8.50	10	6	60%	4.38	15	8	53%	9.88	10	7	70%	4.42													
2008 OP American	67	29	43%	5.07	23	10	43%	5.71			0.00		11	11	100%	5.41	14	6	43%	3.52	19	2	11%	4.71									
2009 OP American	22	12	55%	3.09					4	0	0%	0.00	5	4	80%	3.38	4	3	75%	2.62	9	5	56%	3.13									
2010 OP American	63	55	87%	1.62													6	5	83%	0.84	15	12	80%	1.08	26	25	96%	1.95	16	13	81%	1.80	
Chinese	233	109	47%	4.123	38	16	42%	6.559	44	14	32%	3.414	31	26	84%	6.695	47	19	40%	2.453	40	12	30%	3.45	18	13	72%	1.48	15	9	60%	1.7	
2006 Chinese	20	10	50%	8.66	10	9	90%	9.18	10	1	10%	4.00																					
2007 Chinese	45	29	64%	6.29	5	0	0%	0.00	15	10	67%	4.05	15	14	93%	8.61	10	5	50%	4.30													
2008 Chinese	77	21	27%	4.68	23	7	30%	3.19	6	0	0%	0.00	11	8	73%	5.25	18	3	17%	3.02	19	3	16%	8.28									
2009 Chinese	35	15	43%	1.89					13	3	23%	1.10	5	4	80%	2.88	11	6	55%	1.40	6	2	33%	2.58									
2010 Chinese	56	34	61%	1.58													8	5	63%	1.53	15	7	47%	1.63	18	13	72%	1.48	15	9	60%	1.70	
F1	268	109	41%	2.945	58	12	21%	5.808	42	13	31%	4.002	44	14	32%	4.667	55	23	42%	2.333	37	18	49%	1.91	17	14	82%	1.59	15	15	100%	1.58	
2006 F1	20	6	30%	5.37	9	3	33%	7.50	11	3	27%	3.23																					
2007 F1	55	17	31%	5.04	12	2	17%	6.38	13	6	46%	4.87	15	5	33%	4.56	15	4	27%	5.21													
2008 F1	62	12	19%	4.76	17	5	29%	5.47	14	4	29%	3.28	13	1	8%	7.50	13	1	8%	2.58	5	1	20%	6.58									
2009 F1	63	17	27%	3.44	20	2	10%	3.54	4	0	0%	0.00	16	8	50%	4.38	16	7	44%	2.34	7	0	0%	0.00									
2010 F1	68	57	84%	1.54													11	11	100%	1.26	25	17	68%	1.63	17	14	82%	1.59	15	15	100%	1.58	

**Summary of the Back-cross
Data for CT - current November 2010**

							Table 1						
Summary							totals	3970	2198	1373	62%	4.54	
Survivability and average height of the CT back-cross trees by Orchard								293	290	161	56%	8.45	
Table 1. by individual line planting by year.								828	591	415	70%	7.80	
Table 2. Consolidated and completed lines.								1240	493	306	62%	4.48	
								200	255	96	38%	2.83	
								2010	780	569	395	69%	1.62
								2011	629	0	0	0	0.00
Lines	#	C	MT Code	FT Code	Orchard	Year							
Individual Lines													
Enfield 1	1	x	CT-EN001	AG751	Salem	2006	153	151	64	42%	5.38		
Rocky Hill	2												
	2	x	RHR1T4	CB258	NCLT	2008	29	26	25	96%	5.46		
	2	x	RHR2T5	CB258	NCLT	2008	70	58	42	72%	5.75		
Salem1	2	x	RHR3T2	CB258	NCLT	2008	38	31	22	71%	5.11		
	3												
	3	x	CT-SL006	CH271	Salem	2007	56	55	36	65%	4.41		
Stafford	3	x	CT-SL006	CH271	Salem	2008	47	48	26	54%	2.29		
	3	x	CT-SL006	CH271	Salem	2009	18	18	0	0%			
	4	x	CT-ST007	CH283	NCLT	2007	192	188	153	81%	9.94		
Tolland	5												
	5	x	CT-TL008	CH526	GMFC	2007	150	33	18	55%	5.22		
	5	x	CT-TL009	CH526	GMFC	2007	164	50	38	76%	5.15		
Woodbridge (Calistro)	5	x	CT-TL009	CH526	GMFC	2008	40	39		98%	5.10		
	6	x	CT-WD003	HE416	Woodbridge	2006	140	139	97	70%	10.47		
	7	x	CT-MN005	IL432	Woodbridge	2007	151	150	107	71%	9.37		
Manchester	7	x	CT-MN005	IL432	Woodbridge	2007	151	150	107	71%	9.37		
Roxbury	8	x	HHR1T6	IL940	Salem	2007	115	115	63	55%	4.18		
Burlington	9	x	CT-BL017	ME369	Woodbridge	2008	596	120	81	68%	4.38		
	9	x	CT-BL017	ME369	Woodbridge	2009		36	28	78%	2.73		
Canaan	10												
	10	x	CT-CN018	ME585	GMFC	2008	460	125	62	50%	3.58		
Litchfield (Town Farm Rd A)	10		CT-CN018	ME585	GMFC	2009		25	19	76%	2.04		
	11		CT-LF035	IL968	GMFC	2009	23	23	19	83%	1.67		
	11		CT-SA080	IL968	GMFC	2010	37	37	30	81%	1.42		
New Hartford1 (Adamsen-West)	11		CT-NH123	IL968		2011	84						
	12												
Woodbridge (Gregg)	12		CT-WD032	AG200	Guilford	2009	34	34	13	38%	4.34		
	12		CT-WD032	AG200	Guilford	2011							
Humphrey Hill - Wisniewski	13		HHR2T6	CH302	Guilford	2009	35	35	16	46%	4.07		
	13		HHR2T6	CH302	Guilford	2010	15	15	8	53%	1.54		
Litchfield (Town Farm Rd B)	13		CT-LF086	CH302	Guilford	2010	16	9	4	44%	1.25		
	13		CT-LF121	CH302		2011	124						
Union	14		CT-UN011	IL407	Guilford	2008		45	9	20%	4.89		
Old Lyme	15		CT-OL031	ME367	Salem	2009	88	82	0	0%			
	16		CT-TL027	CH90	NCLT	2009	2	2	1	50%	3.00		
Tolland (Pilgrim)	17		CT-WL087	HE367	Middletown	2010	502	150	126	84%	1.81		
	17				Litchfield	2010		150	114	76%	1.53		
Warren (Flat Rocks Rd)	18		CT-WA088	HE155	Litchfield	2010	20	18	2	11%	1.44		
	18		CT-TR060	HE155		2011	18						
Salem2 (Nehantic Forest)	19		CT-SL028a,b	AG1	Guilford	2010	190	190	111	58%	1.57		
Canton6 (Davis)	20		CT-CA118	AG355		2011	134						
Northfield4 (Stronk)	21		CT-ND104	AG387		2011	269						

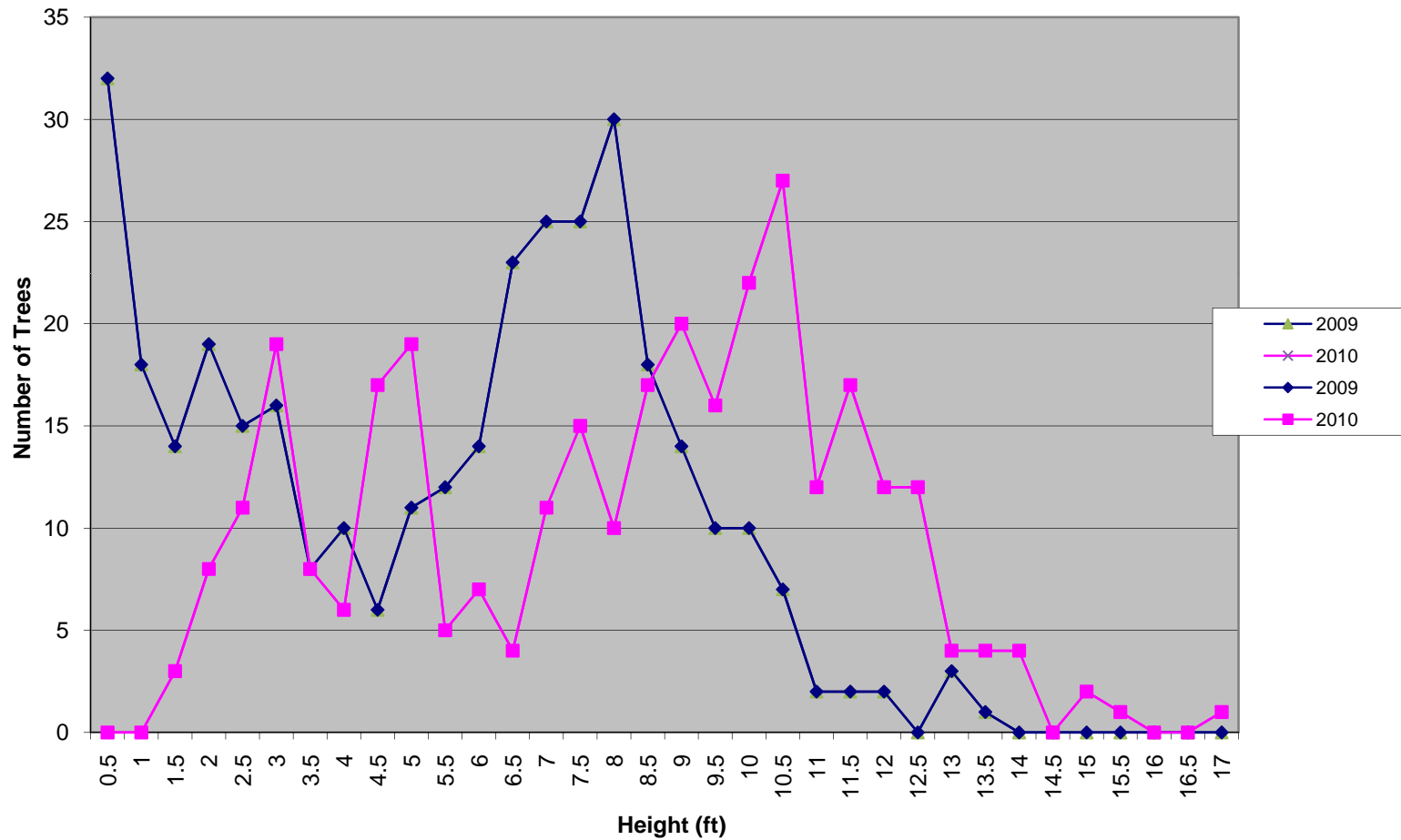
Nuts Available
Planted
Surviving
Survival %
Average Height

Table 2					
3970	2198	1373	62%	4.54	
153	151	64	42%	5.38	
137	115	89	77%	5.51	
121	121	62	51%	3.52	
192	188	153	81%	9.94	
314	123	95	77%	5.14	
140	139	97	70%	10.47	
151	150	107	71%	9.37	
115	115	63	55%	4.18	
596	156	109	70%	3.96	
460	150	81	54%	3.22	
144	60	49	82%	1.52	
34	34	13	38%	4.34	
190	59	28	47%	2.94	
	45	9	20%	4.89	
88	82	0	0%		
2	2	1	50%	3.00	
502	300	240	80%	1.68	
38	18	2	11%	1.44	
190	190	111	58%	1.57	
134					
269					

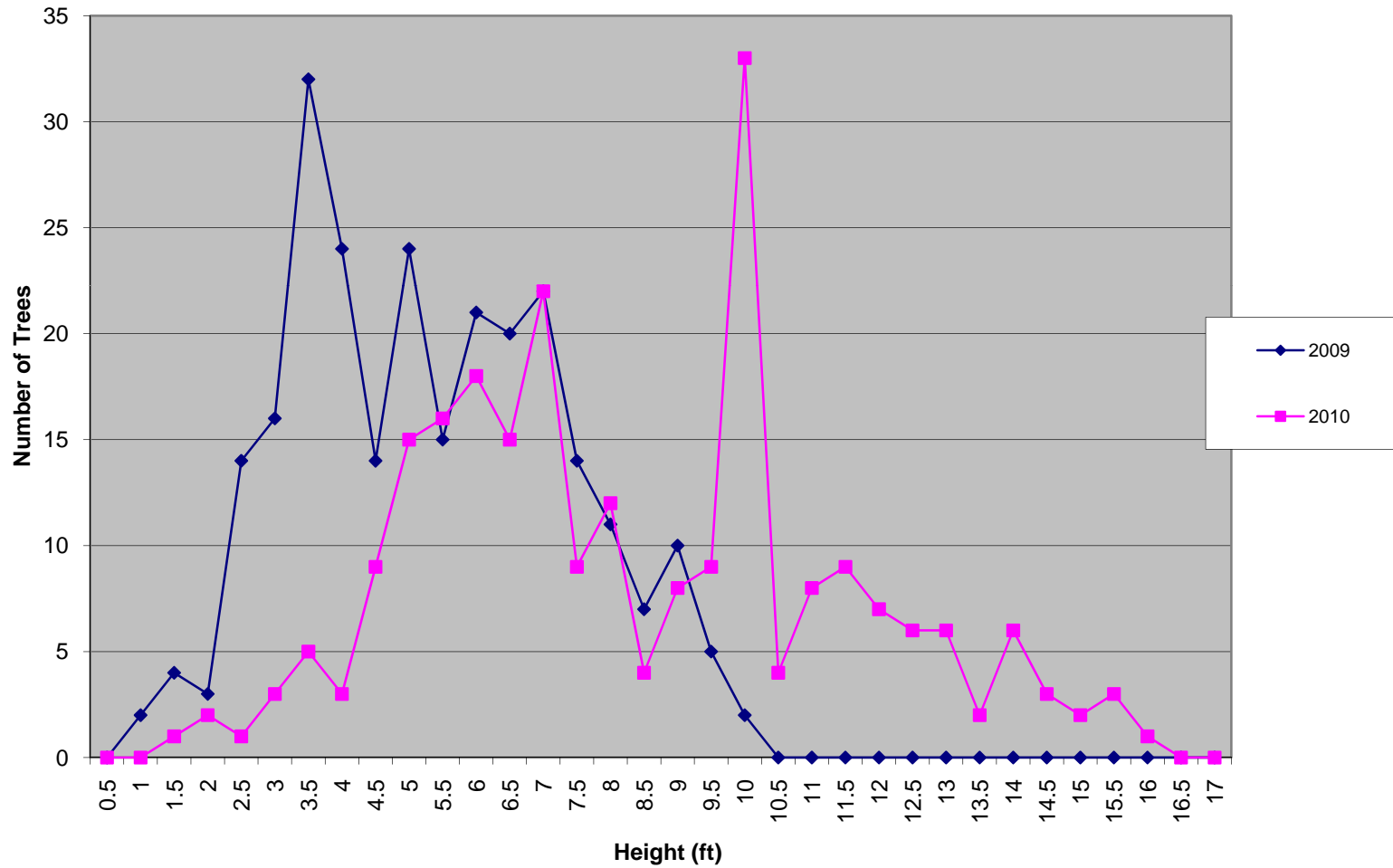
Nuts Available
Planted
Surviving
Survival %
Average Height

Lines shaded bright yellow will require pollinations redone to get to minimum line size
Lines shaded light yellow were pollinated again in 2010 and should now have enough material to complete the line (once planted)

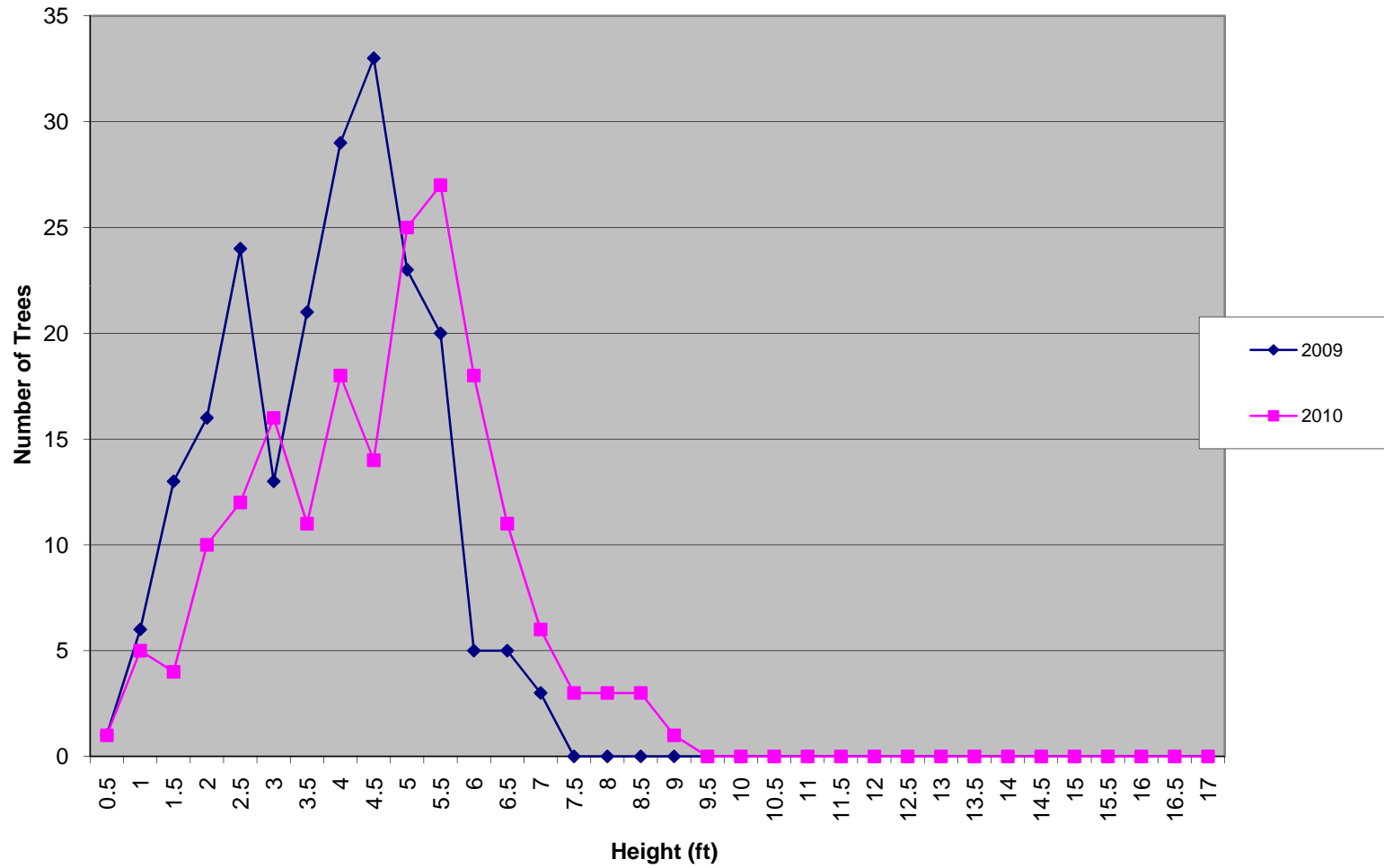
Woodbridge Land Trust Orchard Biomass Change (height) 2009 - 2010



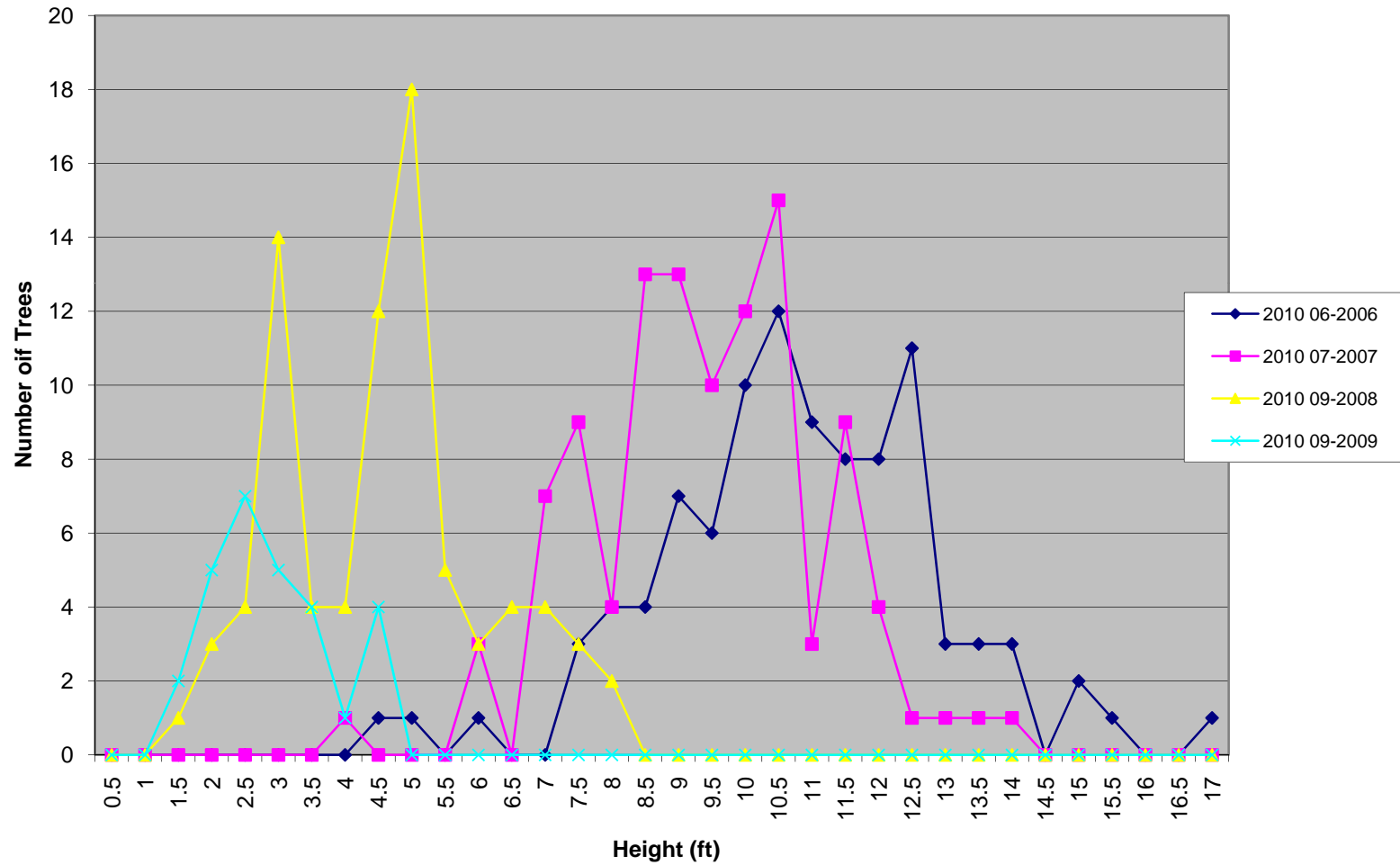
Northern CT Land Trust Orchard Biomass Change (height) 2009 - 2010



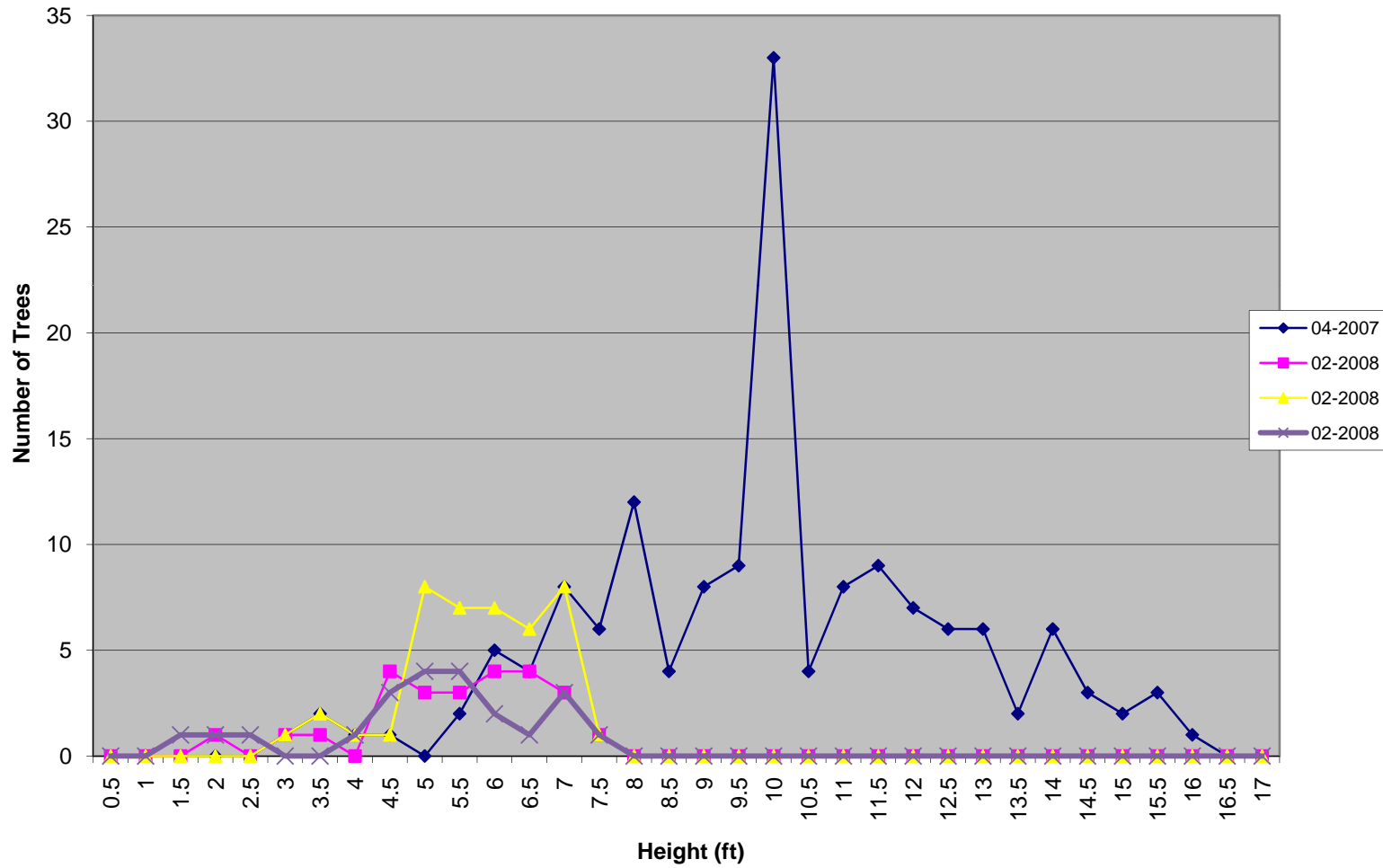
Salem Bingham Orchard Biomass Change (height) 2009 - 2010



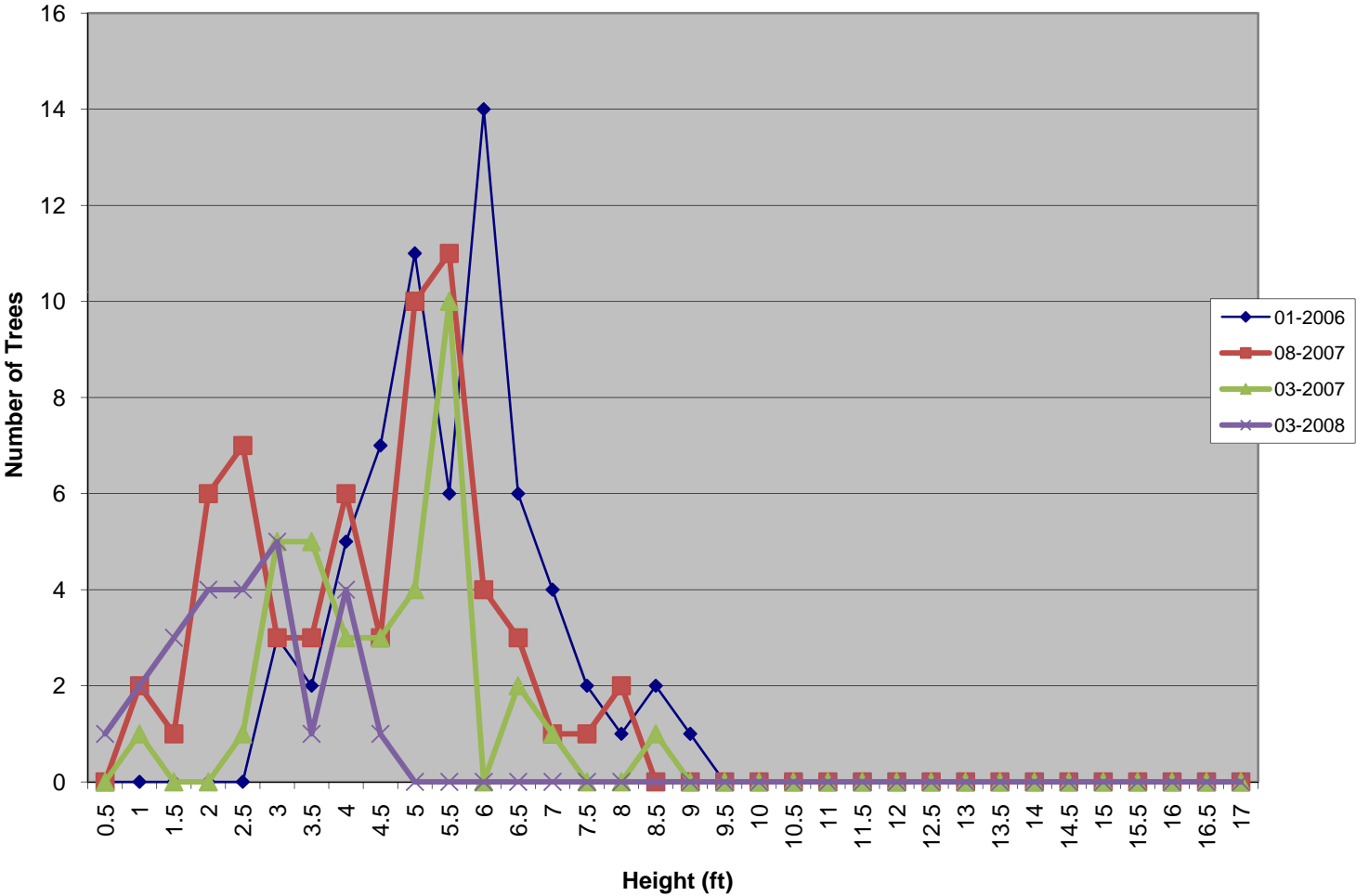
BC4F1 Orchard - Woodbridge Land Trust



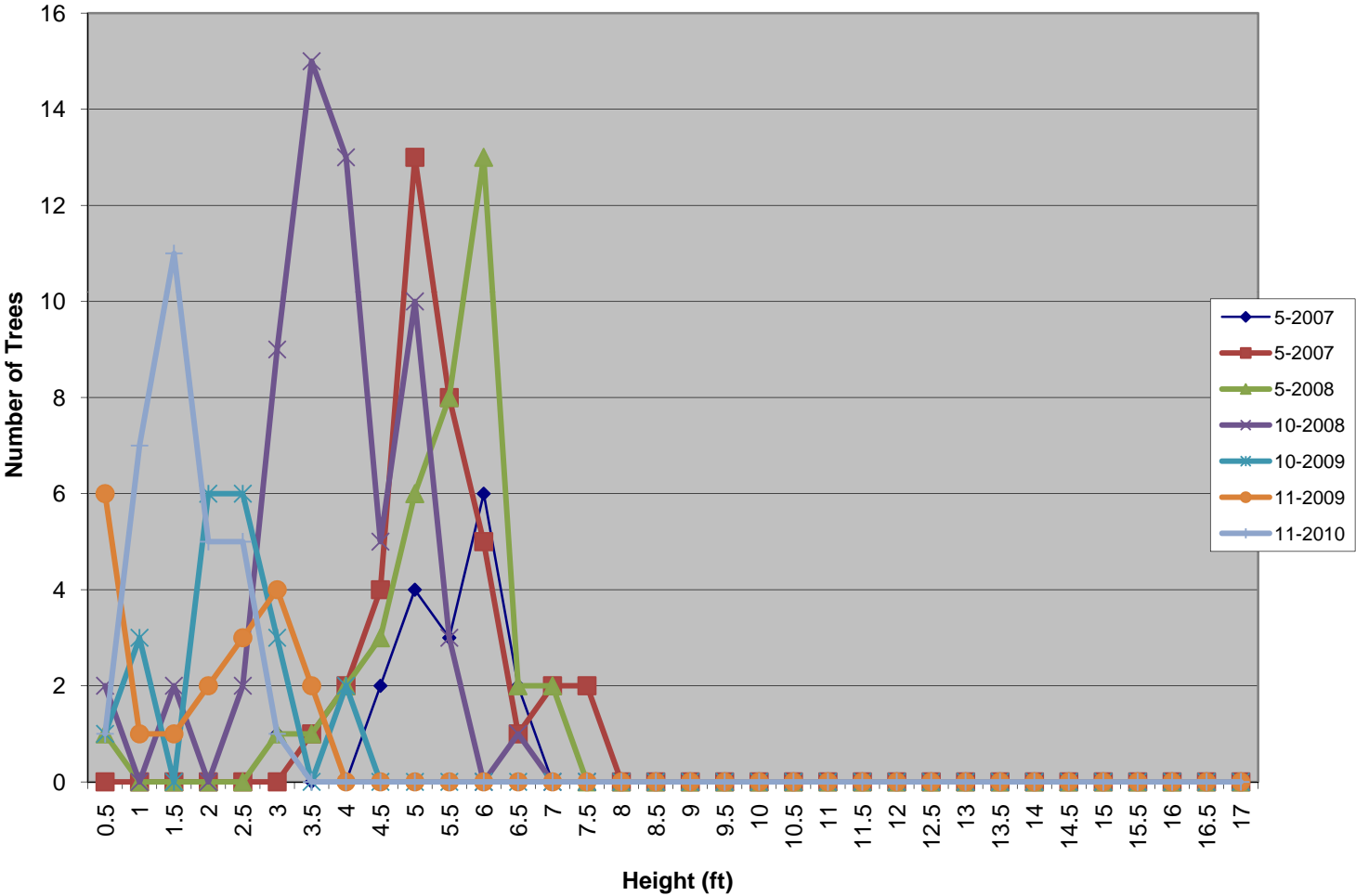
BC4F1 Back-cross Orchard - Northern CT Land Trust



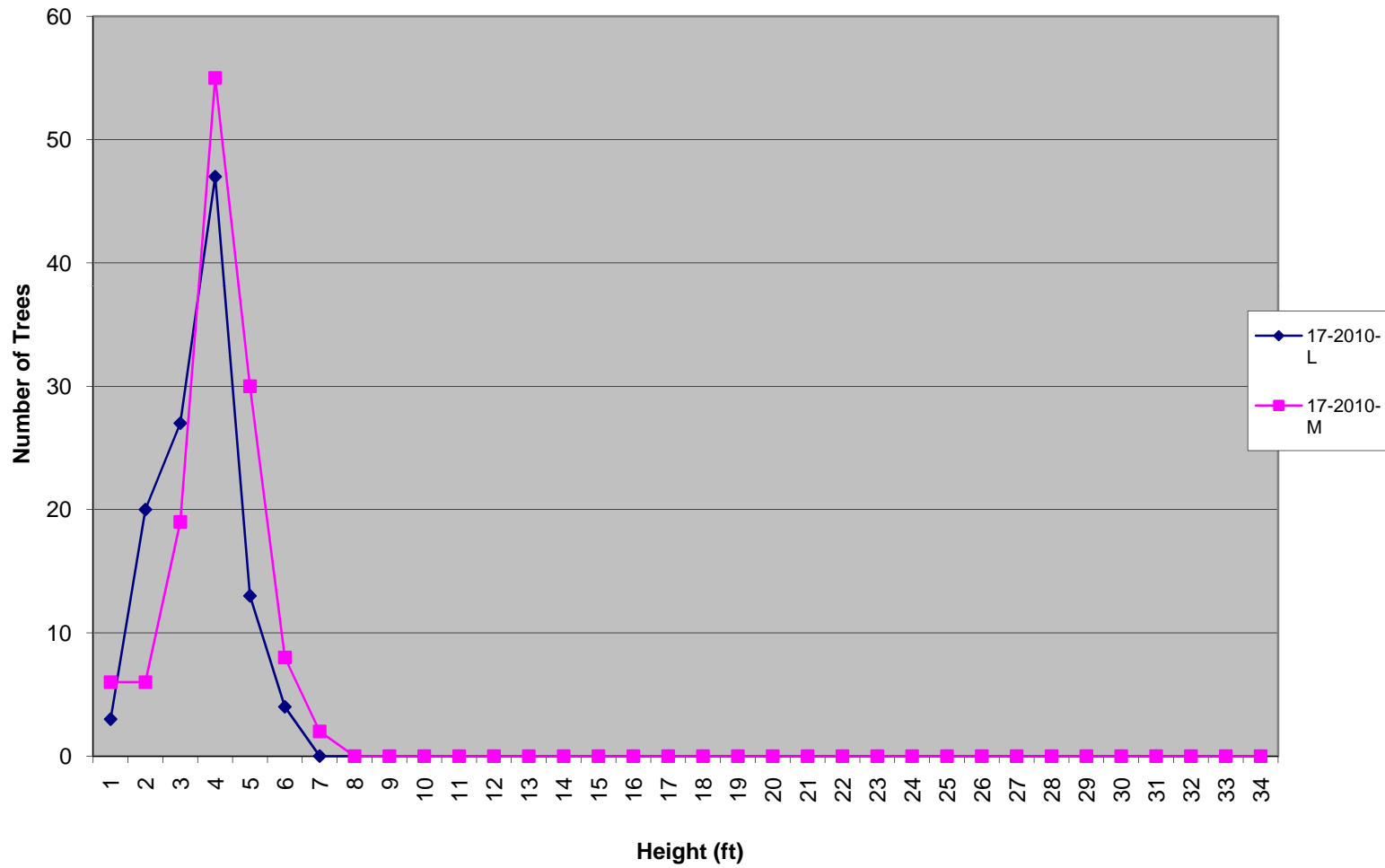
BC4F1 Back-cross Orchard - David Bingham, Salem



BC4F1 Back-cross Orchard - Great Mountain Forest



One Season Growth - Comparing same line at Middletown and Litchfield



BC4F1 Orchard - Guilford Conservation Commission

